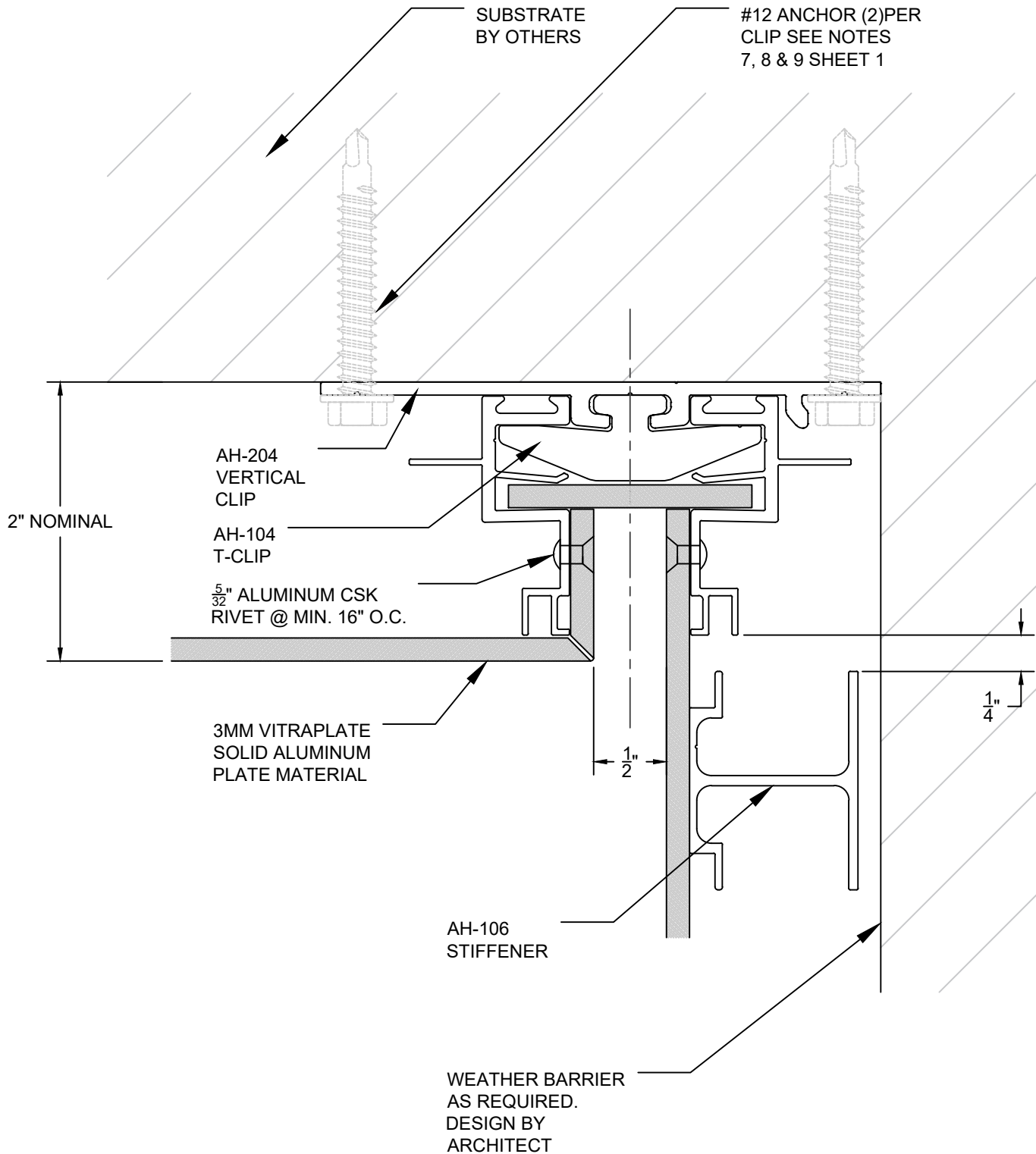


IF SELF TAPPING SCREWS
PENETRATE WEATHER
BARRIER, THESE LOCATIONS
MUST BE SEALED

#10 X 3/8" SELF TAPPING
SCREWS MAY BE USED WITH
EXTERIOR INSULATED WALLS.



Sheet 13	Drawn By JSJ Date Drawn 10/12/23 Revisions No 1 Date 1/18/21 No Date	Project Number DWG-01	Project ARROWHEAD FLEX INSIDE CORNER DETAIL CLIP INSTALLATION © Copyright Fairview Architectural LLC - Patented and/or Patent Pending	 www.fairview-na.com
-----------------	--	------------------------------	--	--